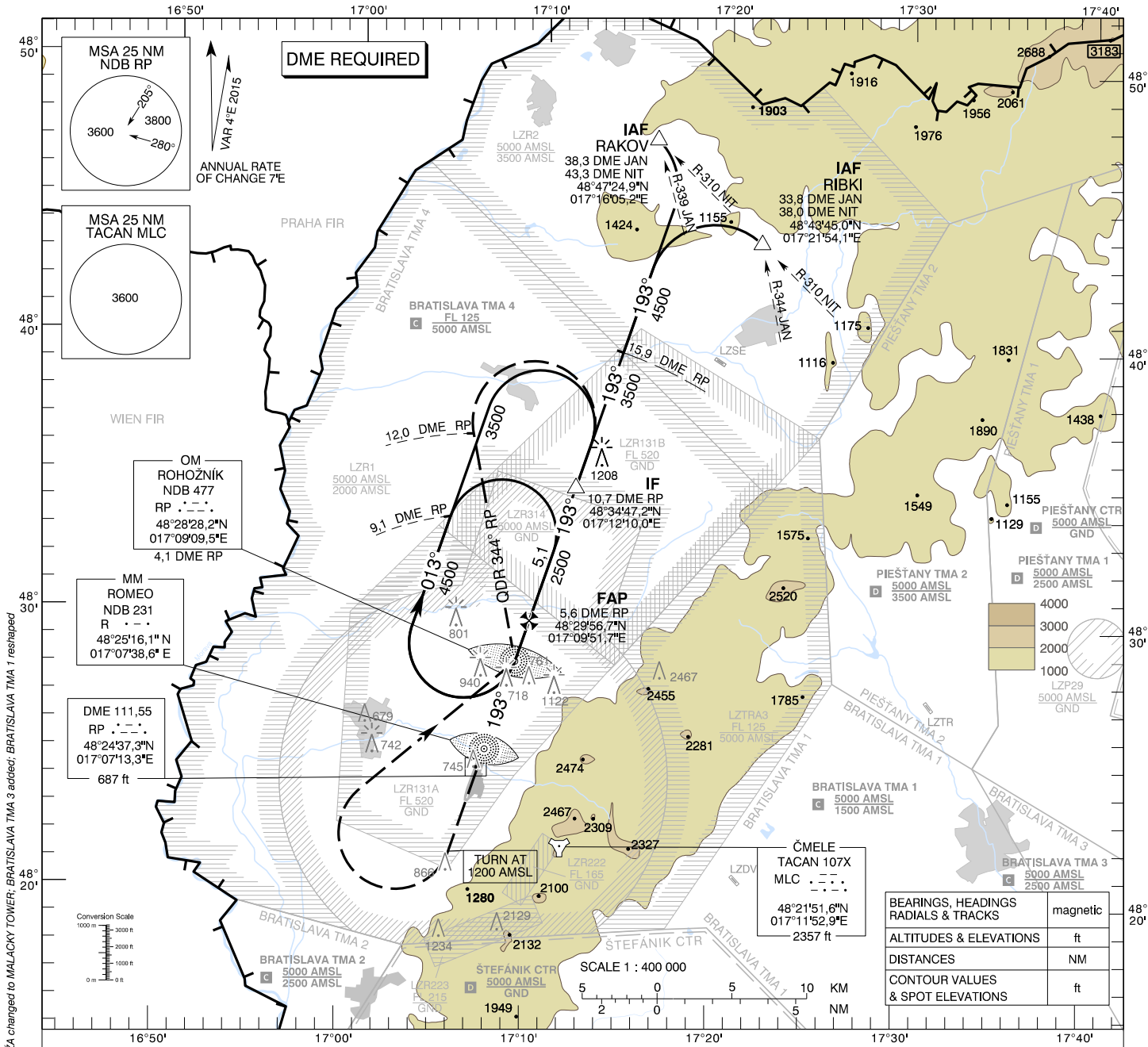


**INSTRUMENT
APPROACH
CHART - ICAO**

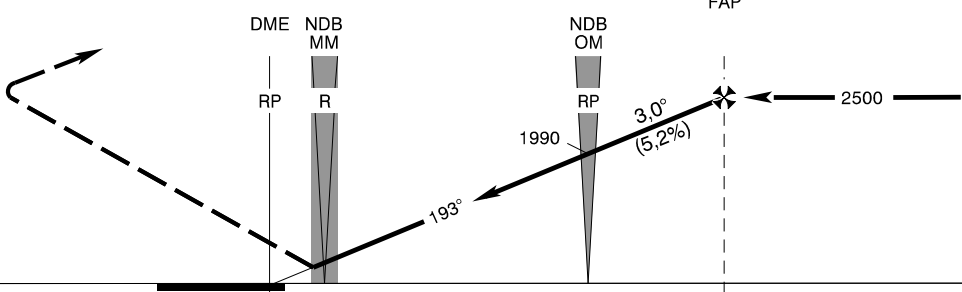
TRANSITION ALTITUDE
10 000 ft
AD ELEV 689 - 25 hPa
THR RWY 19 ELEV 686,4 - 25 hPa

MALACKY PRECISION 127,150
MALACKY RADAR 120,750 (259,625)
MALACKY TOWER 129,575 (120,750)

**MALACKY (LZMC)
PAR RWY 19
ACFT CAT A/B/C/D**

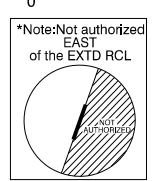


MISSED APPROACH
Climb STRAIGHT AHEAD, at 1200 AMSL
turn RIGHT to NDB RP, climbing to 3500 AMSL.
At NDB RP turn LEFT to track 344°
(QDR 344° RP), at 12 DME RP turn RIGHT
to join the hold or initiate another approach.
MAX IAS 185 kt. No turn before MM.



RDH 55,2
THR RWY 19 ELEV 686,4 - 25 hPa
NM to/from THR RWY 19

OCA (OCH)	A	B	C	D
Straight-in Approach	ft 965 (279)	977 (291)	985 (299)	996 (310)
Circling (* see Note)	ft 1120 (431)	1190 (501)	1650 (961)	1810 (1121)
VIS	m 1800	2800	3600	4600



DME RP	NM	7,0	6,0	5,0	4,0	3,0	2,0	1,0
ALTITUDES	ft	2953	2624	2296	1970	1645	1323	1001

Ground speed	kt	70	90	100	120	140	160	180
Rate of descent (5,2%)	ft/min	372	478	531	637	743	849	955

CHANGES: LZR01, LZR02, LZTRA03 renamed to LZR1, LZR2, LZTRA3; call sign MALACKY VEŽA changed to MALACKY TOWER; BRATISLAVA TMA 3 added; BRATISLAVA TMA 1 reshaped